

#62 Rod Coupling

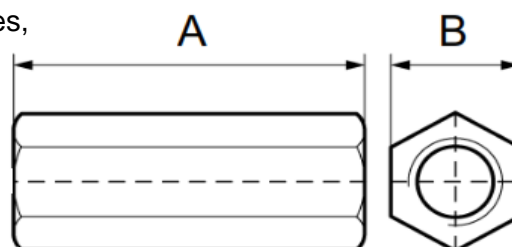


Finishes Zinc Plated, Hot Dipped Galvanized

Materials Carbon Steel, Stainless Steel 304SS & 316SS

Recommended Designed for coupling two hanger rods of equal rod size.

Notes For Reducing Rod Couplings and additional sizes, contact customer service.



ROD SIZE	SPECIFICATION DATA		RECOM. MAX. LOAD (LBS)	APP'X WT. PER 100 (LBS)	PC'S PER PKG.
	A	B			
3/8	1 3/4	9/16	730	11	100
1/2	1 3/4	11/16	1350	10	50
5/8	2 1/8	13/16	2160	18	25
3/4	2 1/4	1	3230	28	25
7/8	2 1/2	1 1/4	4480	58	-
1	2 1/2	1 1/4	5900	46	-
1 1/4	3	1 5/8	6660	140	-
1 1/2	4	2	7000	196	-

QWI 4.3.1 Issue Date Jun/24 Rev.9

Note: when referencing a printed copy of this specification page, please insure it is the latest version as found on our website at www.taylorwalraven.ca

For more information, please contact Customer Service at 1-800-263-8652